

Excimer Laser Engraving Systems

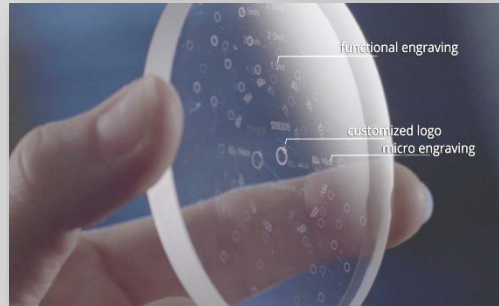
PREMIUM LENS ENGRAVING EXCIMER TECHNOLOGY



PRODUCT OVERVIEW

**EXCIMER LASER SYSTEM
SOLUTIONS**

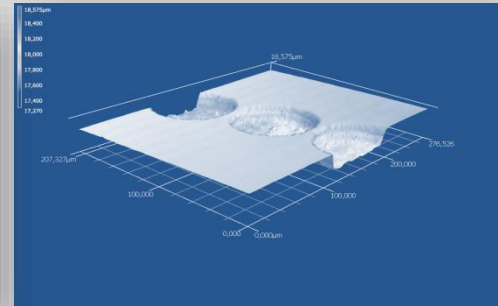




Functional engravings and branding



Engraving intensity variations

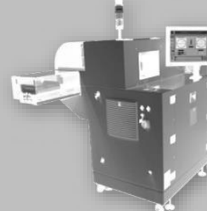


Depth profile

LensMarkTec offers innovative excimer laser solutions for engraving and marking glasses and contact lenses. Featuring unique marking flexibility and premium engraving quality, we set a new standard in the ophthalmic world. For all offered laser engraving systems, we guarantee reliable system stability with highest engraving accuracy at maximum throughput through innovation and quality.

OUR EXCIMER LASER SYSTEM SOLUTIONS

Automatic Version Manual Version Automatic Plus Version Low Cost Version



Suitable for the following labs	with maximum occupancy	low to medium occupancy	with maximum occupancy	low to medium occupancy
Laser source	Excimer Laser 193 nm			
Engravable materials	all organic and mineral lens materials (e.g. CR39, HI, PC)			
Invisible functional engravings	✓	✓	✓	✓
Visible branding after coating	✓	✓	✓	✓
Loading system	automatical and manual	manual	automatical and manual	manual
Quality control	optional	optional	optional	✗
Internal pressure and vacuum generation	✓	✓	✓	✗
XY-System	✓	✓	✓	✗
Z-Measurement	optional			
Marking field	100 mm x 100 mm, focus depth ±0.5 mm			
Productivity (depending on layout design)	180-220 lenses/hour	depending on operator	up to 400 lenses/hour	depending on operator
Process gas	20 liter premix			
Dimensions (wxdxh) and weight	2000 x 800 x 1400 mm 79 x 31.5 x 55 inches 450 kg / 992 lbs	1200 x 800 x 1400 mm 47 x 31.5 x 55 inches 350 kg / 771 lbs	2100 x 850 x 1400 mm 83 x 33.5 x 55 inches 475 kg / 1048 lbs	900 x 650 x 1000 mm 35 x 25.5 x 40 inches 250 kg / 1048 lbs
Power	230 VAC / 110 V (USA), 10 A, 50/60 Hz			230 VAC , 10 A, 50/60 Hz



Mühlauer Straße 5
DE-09232 Hartmannsdorf

+49 (0) 3722. 591 99 10
info@lensmarktec.com



www.lensmarktec.com