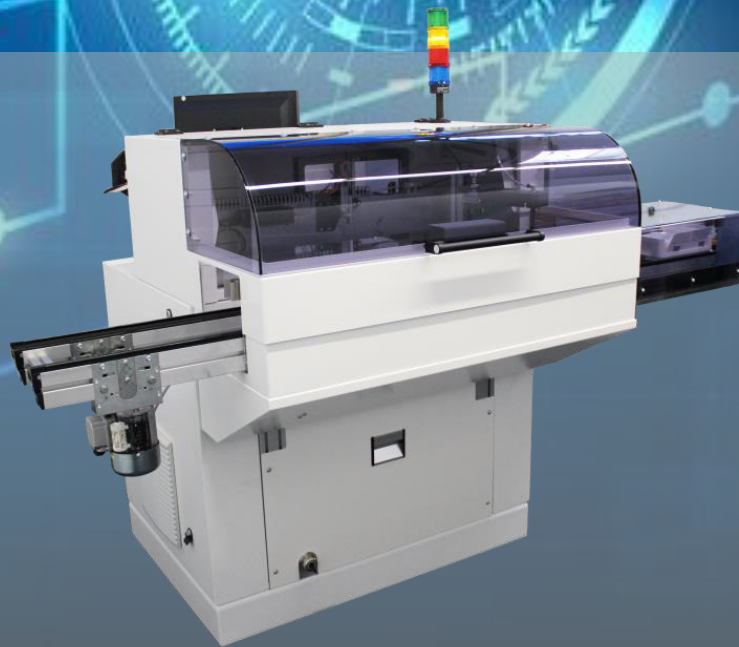


Excimer Laser Engraving System

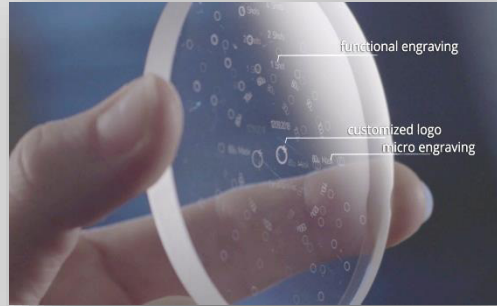
PREMIUM LENS ENGRAVING EXCIMER TECHNOLOGY



AUTOMATIC VERSION

FOR
SPECTACLES, MOLDS AND CONTACT LENSES

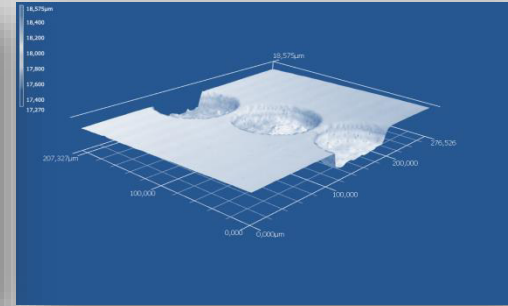




Functional engravings and branding



Engraving intensity variations



Depth profile

FEATURES + BENEFITS

Our innovative laser solution system engraves semi-visible markings on all lens materials. Featuring unique marking flexibility and premium engraving quality, it sets a new standard.

- Excimer laser with 193 nm wavelength engraves premium quality markings on all organic and mineral lens materials
- Fully automatic process control and stability ensures repeatable and outstanding engraving results - 24/7
- Advanced laser causes no thermal stress, microcracks, or coating delamination
- Processing of blocked and unblocked lenses
- Integrated layout editor with intuitive and easy to use software (e.g. easy to integrate macros)
- Easily integrable into existing LMS system and any production environment
- Flexible server communication (OMA / VCA, VC-DCS, LDCS)
- Modular replacement parts for easy servicing and minimized downtime
- Internal pressure and vacuum generation
- Latest laser source technology for low process gas consumption and service cycles

OPTIONS

- Loading works manual or automatically with conveyor system
- Conveyor height and conveyor direction
- Branding of eyeglass lenses with standard software possible
- Multi-selectable dot shape and size (up to 16 styles)

TECHNICAL INFORMATION

Laser	Excimer laser 193 nm
Marking field	100 mm x 100 mm, Focus depth ± 0.5 mm
Productivity	180-210 lenses /hour (depending on layout-design)
Engraving character size	from 0.1 mm to 4.0 mm
Engraving depth	0.10 μm ... 2.00 μm
Position accuracy	± 100 μm
Process gas	20 liter premix
Server interface and host communication	OMA /VCA, VC-DCS, LDCS standard prepared for LMS connection
Interfaces / IT access	Ethernet 1000Mbit (RJ45), USB 3.0, TCP / IP, TeamViewer
Air humidity	max. 40-50 % relative humidity
Operating temperature	18°C to 28°C
Dimensions (wxdxh)	2000 x 800 x 1400 mm 79 x 31.5 x 55 inches
Weight	450 kg / 992 lbs
Power	110 -240 VAC, 10 A, 50/60 Hz

