

Excimer Laser – Legends and Facts

PREMIUM LENS ENGRAVING EXCIMER TECHNOLOGY

Automatic Version
LM-Flexc 193



Manual Version
LM-Flexc 193



EXCIMER LASER

THE PERFECT TOOL
FOR HIGHLY PRECISE
ENGRAVINGS AND MARKINGS





Functional Engraving



Branding



Strong Job-Number Engraving

WHY IT IS NOW TIME FOR RELIABLE AND PROVED EXCIMER LASER TECHNOLOGY?

Meanwhile service intervals for modern excimer lasers have improved in the range of two million lenses due to massive technological development in these systems. The required laser gas lasts nearly two years and is available internationally. But more important, the cost of ownership in term of investment, service, and rejected lenses are the most attractive compared to all other laser technologies.

However, the Excimer laser technology becomes successfully only in combination with a reliable and low-maintenance machine concept. Here the LM-Flexc reflects Excimer experience of more the ten years with a state of the art system-, controller-, service- and handling design.

"3 in 1" UNIQUE LENS ENGRAVER SYSTEM

FOR ALL ENGRAVING NEEDS IN THE MODERN OPHTHALMIC LAB

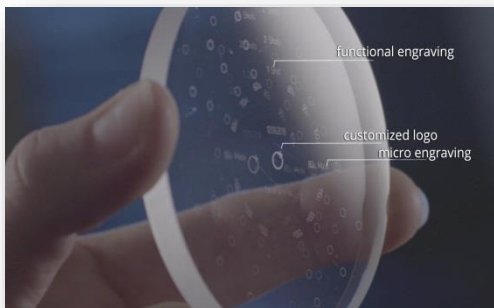
"3 in 1" Lens-Engraver – 193 nm for functional engravings, brandings and job-number engravings is steady the best available laser quality on the market, a unique marking flexibility and micro-crack-free smooth and engraving results on all known lens materials without any compromise.

Further this Excimer engraver works perfect on tinted and coated lenses and is long term stable due to the LM-Flexc integrated energy control.

Contrary to other laser technologies no further process steps are required.

FEATURES + BENEFITS

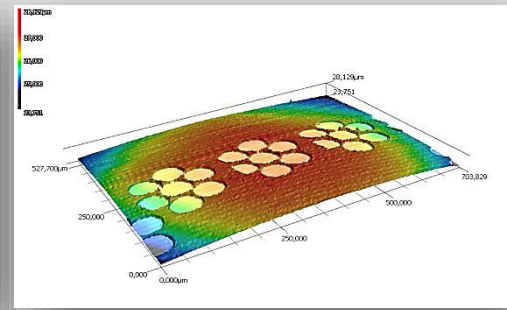
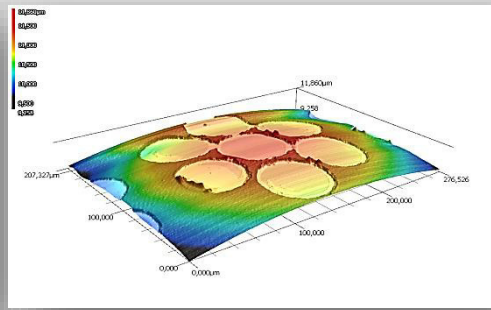
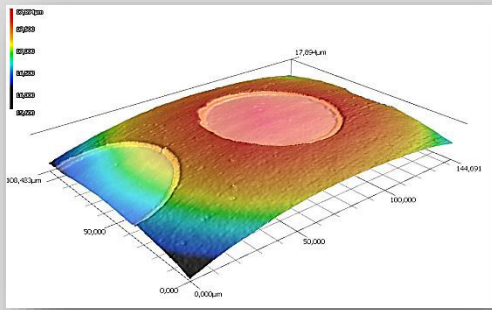
- More than 180 lenses / h throughput
- Real time user interface in ergonomic design
- OMA/VCA host connection protocol
- Operation under standard Lab Management environments
- Extended laser service cycle for about 2 million engraved lenses



TECHNICAL INFORMATION

Laser	Excimer laser 193 nm
Marking field	100 mm x 100 mm, Focus depth ± 0.5 mm
Productivity	180-210 lenses /hour (depending on layout-design)
Process gas	20 liter premix every 2 years
Dimensions (wxdxh)	
Manual Version	1200 x 800 x 1400 mm
Automatic Version (with conveyor)	2000 x 800 x 1400 mm
Power	110 -240 VAC, 10 A, 50/60 Hz





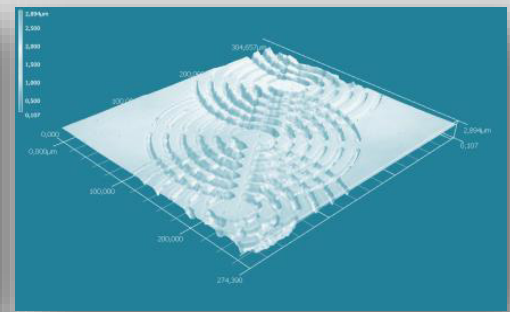
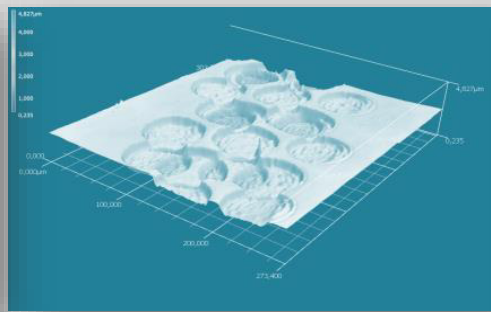
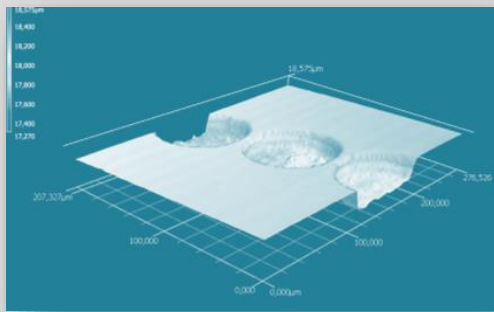
LM-FLEXC RX LENS ENGRAVER UV-193 NM COLD-ABLATION – PREMIUM QUALITY ENGRAVING

In recent years premium lens engraving quality by excimer technology became standard for high-end freeform and stock lenses since alternative laser technologies did not persuade.

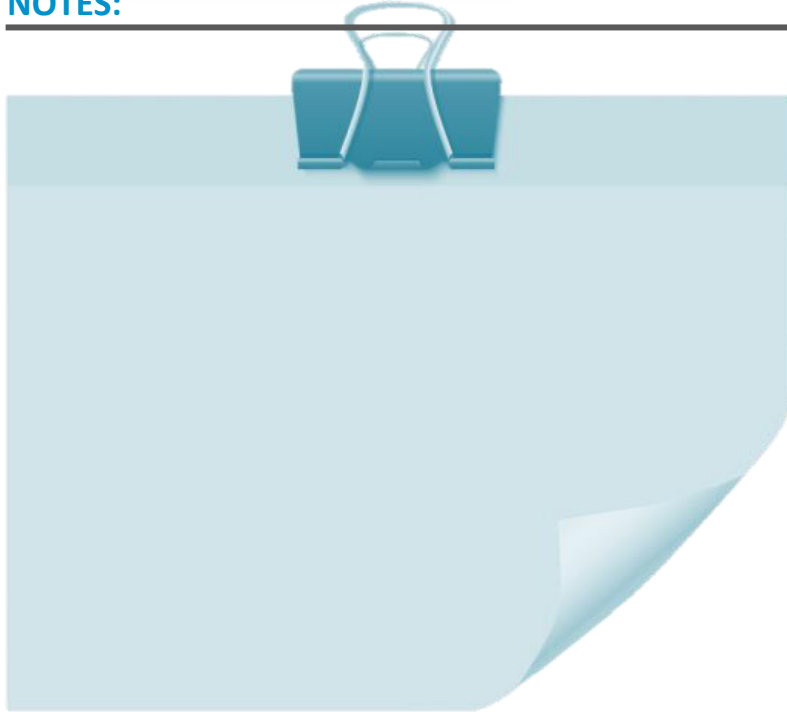
For example CO2 lasers supplied uneven engraving results and Solid State 266 nm effected immense service costs.

Features	Specification	User benefits
Lens material	<ul style="list-style-type: none"> Premium engraving on CR39, HI, PC, Molds & contact lenses 	<ul style="list-style-type: none"> Professional quality on all lens materials by nearly the same process parameters
Long term stable process quality	<ul style="list-style-type: none"> Online and full automatic process control 	<ul style="list-style-type: none"> Identical engraving quality 24 / 7
Handling concept	<ul style="list-style-type: none"> Fully flexible handling concept for belt direction and conveyor style/size/height 	<ul style="list-style-type: none"> Machine is even prepared for later handling and conveyor modifications
Server interface & host communication	<ul style="list-style-type: none"> OMA/VCA Standard Prepared for LMS-Connection and other local solutions 	<ul style="list-style-type: none"> Easy integration in existing Server structures Offline modification
Service concept and availability	<ul style="list-style-type: none"> Modular part replacements No compressed air required 	<ul style="list-style-type: none"> Global standard part availability Supplier autonomy
Operation	<ul style="list-style-type: none"> Integrated generators to compress air and vacuum Low process gas consumption Laser service cycles every of > 2 million lenses 	<ul style="list-style-type: none"> Autarchic from air contamination Limited contamination risk Gas cylinder exchange: 2 years Reasonable costs from 0,02 € / lens





NOTES:





We always
look forward
to a good and
constructive
cooperation
with our
partners.

 **LensMarkTec**
QUALITY & INNOVATION



Mühlauer Straße 5
DE-09232 Hartmannsdorf

+49 (0) 3722. 591 99 10
info@lensmarktec.com



www.lensmarktec.com